

Digital Duplicator

RICOH DD 6650P

Copier Printer Facsimile Scanner

RICOH
imagine. change.



DD 6650P

135 ipm
monochrome
and spot color

Discover the versatility of quality, high-speed output

Be ready for anything — at any time — with the highly productive RICOH® DD 6650P digital duplicator. This versatile, high-speed device produces up to 135 offset-like quality images per minute with incredible reliability to handle even the most demanding tasks faster, more efficiently and economically. It consumes less energy than comparable conventional high-speed printing systems to make a bigger impact on your workflow and smaller impact on the environment. Choose it as your primary device in a high-volume office or production environment, or use it as part of a strategic Ricoh Managed Document Services (MDS) initiative to help reduce total cost of ownership throughout your organization.

Seeing is Believing

Take advantage of our proprietary imaging system to produce impressive output with true 600 x 600 resolution. The Ricoh DD 6650P digital duplicator features evenly distributed, fast-drying ink for crisp, clean edges without offset or bleeding. It regulates ink consumption automatically for exceptional halftones and precise matching with the original image. Its master chemistry also minimizes roller marks and stains, so users in print-for-pay, central reprographic departments, educational and faith-based institutions can create compelling output every time — even while duplex printing.



Designed for Productivity

Engineered to be overworked, but not overpriced, the Ricoh DD 6650P digital duplicator offers 4,000-sheet master durability and an extended duty cycle of 600,000 prints per month to ensure that you can perform everyday office tasks and extended production runs with speed, convenience and reliability. Packed with power in a compact footprint, it has a robust architecture and few moving parts for maximum uptime. Use it to perform all of your long run, print and copy needs — at sizes up to 11" x 17" — without compromising efficiency or your budget.



Intuitive Operation Panel

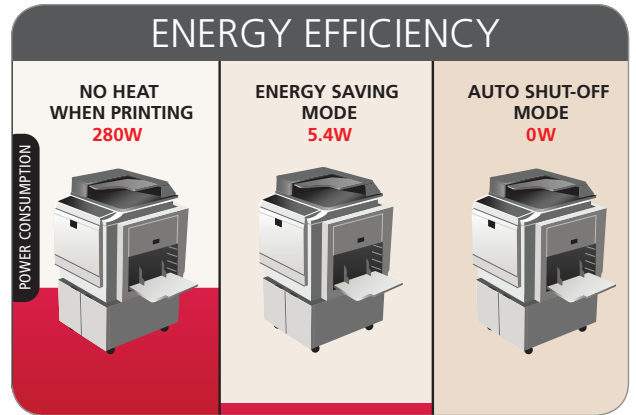
Access advanced print and copy capabilities with a single touch. The Ricoh DD 6650P digital duplicator offers an easy-to-use touch screen for exceptional control of primary operating functions. The control panel uses large, LED-backlit keys to help walk-up users navigate every print and copy job. It includes intuitive prompts, graphics and other indicators to indicate system status. It even offers one-button control for printing and master-making to expedite tasks and minimize input errors.



Less energy for high-powered performance

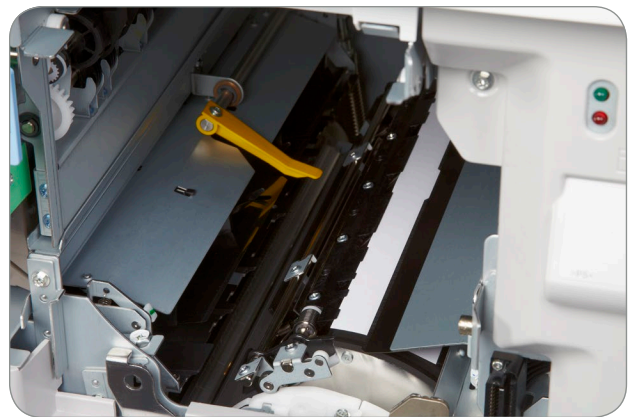
Sustain Energy Efficiency

The Ricoh DD 6650P digital duplicator offers a host of convenient features to reduce energy consumption to less than comparable high-speed printing systems. The copy process doesn't require heat, so it can produce sharp images with excellent contrast while conserving energy. Its energy-saving mode curbs energy consumption even more — up to 88% — compared to standby mode. Plus with automatic shut-off mode, the device turns off when not in use.



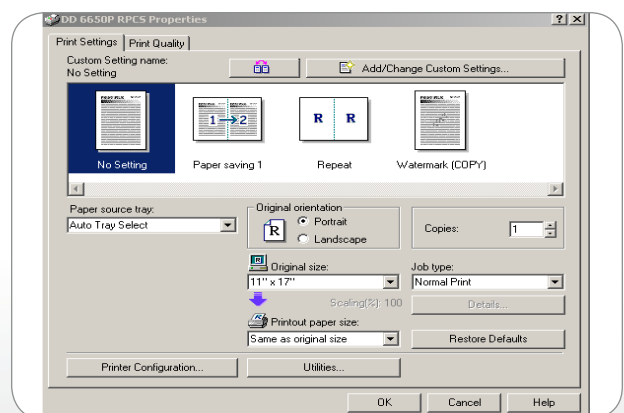
Simplicity Drives Reliability

Every organization thrives on consistency. That's why the Ricoh DD 6650P digital duplicator is equipped with an innovative paper clamping system for accurate registration. It handles multiple colors and special paper stocks and produces smooth half tones and sharp fine lines — making it ideal for environments requiring superior output. It offers enhanced paper feed technology to minimize misfeeds. In addition, the retry feed mechanism reduces false jams when running various types of paper.



Advanced Network Control

The Ricoh DD 6650P digital duplicator combines media flexibility with convenient connectivity options to deliver unrelenting performance page after page, month after month. It connects with most standalone computers or networks and even prints directly from a Mac with the optional Adobe® PostScript® 3™. Take advantage of Ricoh's built in Refined Print Command Stream™ (RPCS) controller and set print settings in moments via icon-based controls. The DD 6650P also integrates with Ricoh @Remote™, Web Image Monitor and SmartDeviceMonitor utilities for fast, easy desktop administration.



Ricoh DD 6650P

SYSTEM SPECIFICATIONS

Specifications

| | |
|--|--|
| Configuration | Desktop |
| Printing Process | Fully Automatic One Drum Press Cylinder System (Standard Black Drum included) |
| Power Source | 120V, 60Hz |
| Power Consumption | Master Making/Printing: Up to 280w (135 ppm) Standby: Less than 45.7w Energy Saving Mode (Sleep): 5.4w 2.44 kWh/week |
| Typical Electricity Consumption (TEC) | |
| Default Time to Sleep | 1 minute |
| Recovery Time from Sleep | 22 seconds |
| Dimensions (WxDxH) | Set up (with platen): 55.9" x 28.7" x 23.9" (1,420 x 730 x 608 mm) Set up (with ADF): 55.9" x 28.7" x 31.5" (1,420 x 730 x 801 mm) Stored (with platen): 29.5" x 28.7" x 23.9" (750 x 730 x 608 mm) Stored (with ADF): 29.5" x 28.7" x 31.5" (750 x 730 x 801 mm) |
| Weight (Mainframe) | 230 lbs./104.5 kg |
| Duty Cycle | 600,000 prints |
| PM Interval | 1,200,000 prints (or 12 months) |
| Print | Single color one pass |
| Color Inks Available | Black, Red, Blue, Brown, Green, Gray, Purple, Yellow, Navy, Maroon, Teal, Orange, Hunter Green, Burgundy, Gold, Reflex Blue, Violet |
| Print Speed | 60 – 135 sheets/min. (6 steps) |
| Print Resolution | 600 x 600 dpi |
| First-Print Time (A4) (Platen) | 18 seconds |

| | |
|---|---|
| Paper Feed Capacity | 1,000 sheets (20 lb.) |
| Paper Delivery Capacity | 1,000 sheets (20 lb.) |
| Paper Size | 2.8" x 5.9" to 12.8" x 17.6" (70 x 148 mm to 325 x 447 mm) |
| Paper Weight | 12.5 – 55.6 lbs (47 – 209 g/m ²) |
| Print Area (max.) | 11.4" x 16.6" (more than 290 x 422 mm) |
| Original Size | Platen: Max. 11.7" x 17.0" (297 x 432 mm) ADF: 5.8" x 8.3" to 11.7" x 17.0" (148 x 210 mm to 297 x 432 mm) |
| Original Type | Book, Sheet |
| Image Modes | Letter, Photo, Letter/Photo Auto Separation, Tint, Pencil |
| Reproduction Ratio | 50, 65, 74, 77, 85, 93, 121, 129, 155, 200% |
| Zoom | 50 – 200% (by 1%) |
| Image Position (Horizontal/Vertical) | H: +/- 10 mm (by 0.25 mm) V: +/- 10 mm (by 0.25 mm) |
| Interactive Touch-Screen | Yes |
| Masters (A3) | 200 sheets per roll |
| Master Run Length | 4,000 |
| Master Feed Capacity (A3) | 200 masters |
| Eject Master Box (A3) | Approx. 100 masters |
| Paper Clamper | Standard |
| Job Separation | Standard |
| Security Mode | Drum Lock, Print Lock, Master Box Lock |
| Program Mode | Yes (10 programs) |
| Energy Saver Mode/ Auto Shut-Off | Standard/0W |
| Skip Feed | Standard (max. 9 revolutions) |
| Auto Density Control | Standard |
| Print Density Control | Standard (4 levels) |
| Auto Color Drum Detection | Standard |

| | |
|-------------------------|--|
| Special Features | User Codes (200); Image Combine (2 in 1, 4 in 1); Repeat Print (2/4/8/16 in 1 and custom); Overlay; Double-feed Detection; Quality Start |
|-------------------------|--|

Controller (Standard)

| | |
|----------------------------------|---|
| CPU | 300 MHz |
| RAM | 128 MB |
| Page Description Language | Standard: RPCS, PJI Optional: Adobe PostScript 3, Adobe PDF |
| Host Interfaces | USB 1.1/2.0, Ethernet 10BASE-T/100BASE-TX, IEEE802.3u |
| Network Protocol | TCP/IP, NetBEUI |
| Network Operating System | Windows XP/Server2003/Vista/Server2008/7/Server2008R2 (32/64 bit); Mac OSX v10.4 – 10.8 |

Accessories

| | |
|---------------------------|--|
| Cabinet DD66 | |
| Dimensions (WxDxH) | 24.1" x 24.8" x 17.6" (613 x 630 x 448 mm) |
| Weight | 44 lbs./20 kg |

Additional Accessories

| | |
|-----------------------------------|--|
| ADF DF7000 | |
| Drum Type 90 11" x 17"/A3 | |
| Drum Type 90 8.5" x 11"/A4 | |
| Platen Cover Type 3352 | |
| PostScript 3 Board Type 2 | |

RICOH
imagine. change.

www.ricoh-usa.com

Ricoh Americas Corporation, 70 Valley Stream Parkway, Malvern, PA 19355, 1-800-63-RICOH
Ricoh® and the Ricoh Logo are registered trademarks of Ricoh Company, Ltd. All other trademarks are the property of their respective owners. ©2013 Ricoh Americas Corporation. All rights reserved. The content of this document, and the appearance, features and specifications of Ricoh products and services are subject to change from time to time without notice. Products are shown with optional features. While care has been taken to ensure the accuracy of this information, Ricoh makes no representation or warranties about the accuracy, completeness or adequacy of the information contained herein, and shall not be liable for any errors or omissions in these materials. Actual results will vary depending upon use of the products and services, and the conditions and factors affecting performance. The only warranties for Ricoh products and services are as set forth in the express warranty statements accompanying them.

R3434

